

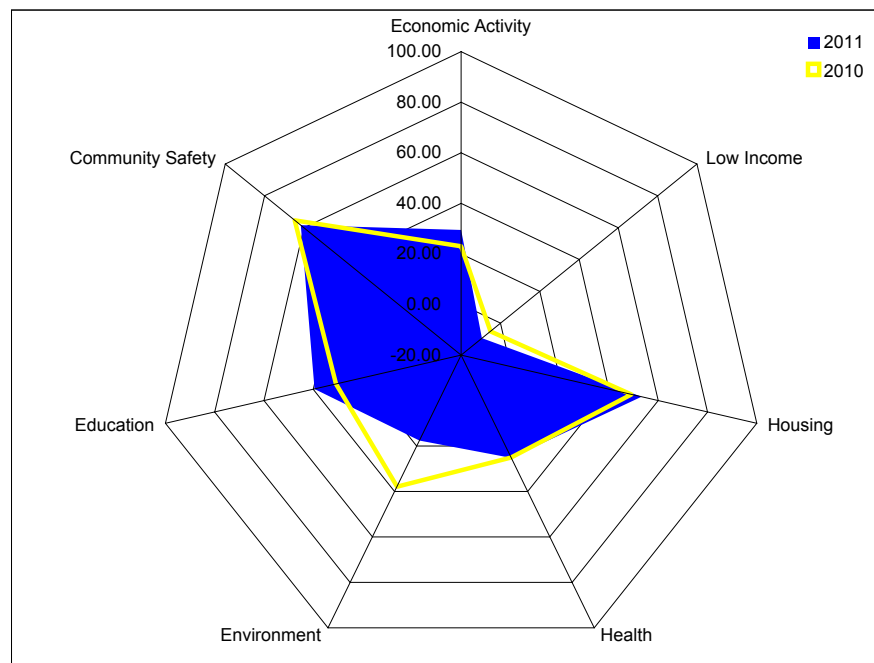
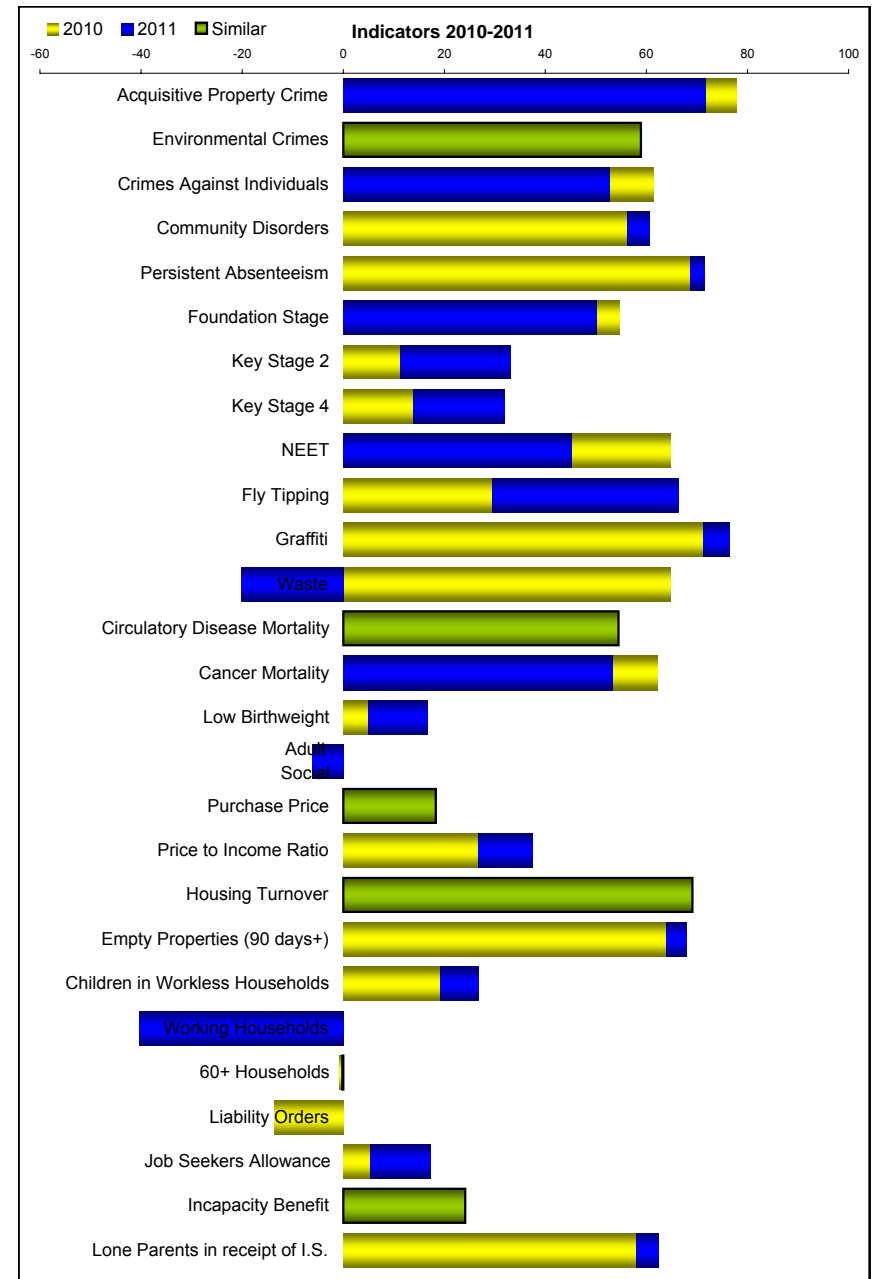
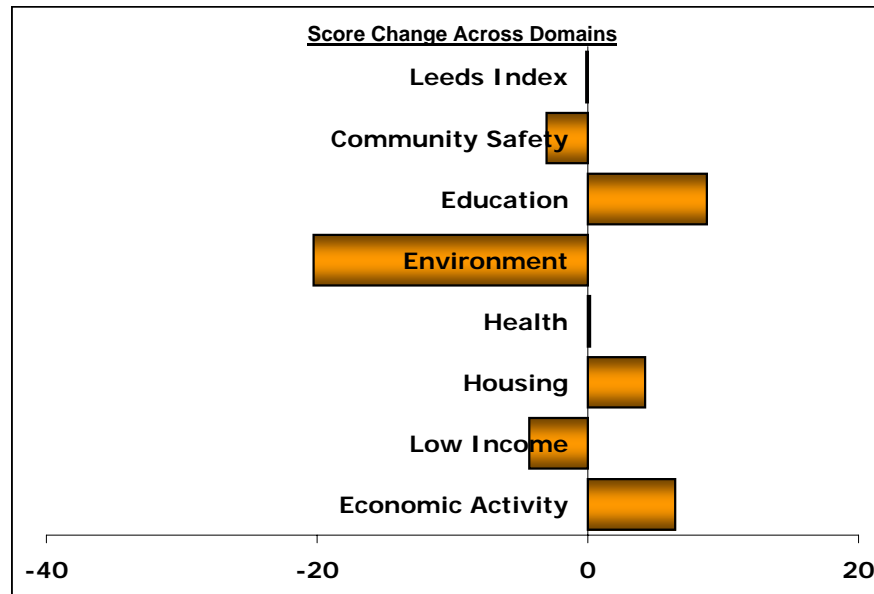


# Leeds Neighbourhood Index

Domain Summary	2010		2011		Change	
	Rank	Score	Rank	Score	Rank	Score
Economic Activity	14	23.04	14	29.48	0	6.45
Low Income	1	-5.03	1	-9.36	0	-4.33
Housing	21	49.09	27	53.32	6	4.23
Health	12	25.08	8	25.25	-4	0.17
Environment	2	37.79	6	17.54	4	-20.26
Education	28	30.76	32	39.55	4	8.79
Community Safety	20	64.64	15	61.60	-5	-3.04
Leeds Index	4	5.73	5	5.60	1	-0.13

Indicators	2010		2011		Change	
	Data	Score	Data	Score	Data	Score
Job Seekers' Allowance	11.21%	5.17	9.95%	17.10	-1.26	11.93
Incapacity Benefit	10.78%	23.06	10.64%	24.14	-0.14	1.07
Lone Parent Income Support	3.21%	57.74	2.87%	62.27	-0.34	4.53
Children in Workless Households	621	18.95	561	26.80	-60	7.84
Households Receiving In-Work Benefits	313	-11.44	391	-40.22	78	-28.78
60+ Households In Receipt of Benefits	606	-0.74	603	-0.18	-3	0.55
Court Payment Orders	633	-13.55	575	-2.48	-58	11.07
Average Purchase Price	£143,613	18.31	£136,513	16.31	-£7,099	-2.00
Price / Income Ratio	4.98	26.57	5.70	37.31	0.72	10.75
Housing Turnover	15.33%	69.11	15.66%	68.20	0.33	-0.91
Empty Homes (90+ days)	9.04%	63.65	8.25%	67.95	-0.79	4.29
Circulatory Disease Mortality	111.00	54.48	111.67	54.14	0.67	-0.34
Cancer Mortality	114.77	62.18	130.74	53.15	15.97	-9.02
Low Birthweight	12.80	4.84	11.58	16.67	-1.2	11.82
Adult Social Care	220	0.00	231	-6.15	11	-6.15
Fly Tipping	541	29.23	155	66.30	-386	37.08
Graffiti	38	71.04	31	76.38	-7	5.33
Waste Issues	116	64.73	390	-20.04	274	-84.77
Persistent Absenteeism	6.76%	68.55	6.19%	71.45	-0.57	2.90
Foundation Stage	50.00%	54.55	46.76%	50.13	-3.24	-4.42
Key Stage 2	44.00%	11.03	56.39%	32.99	12.39	21.96
Key Stage 4	24.26%	13.66	37.01%	31.82	12.75	18.16
NEET	5.94%	64.81	9.12%	45.20	3.18	-19.61
Acquisitive Property Crime	388	77.78	470	71.68	82	-6.09
Environmental Crimes	211	58.93	219	57.22	8	-1.70
Crimes Against Individuals	353	61.31	426	52.54	73	-8.77
Community Disorders	823	55.96	749	60.57	-74	4.61

## E02002371: Chapeltown



**Notes:**

**Domain Summary:** Shows the rank, score and changes for each domain, for each year.

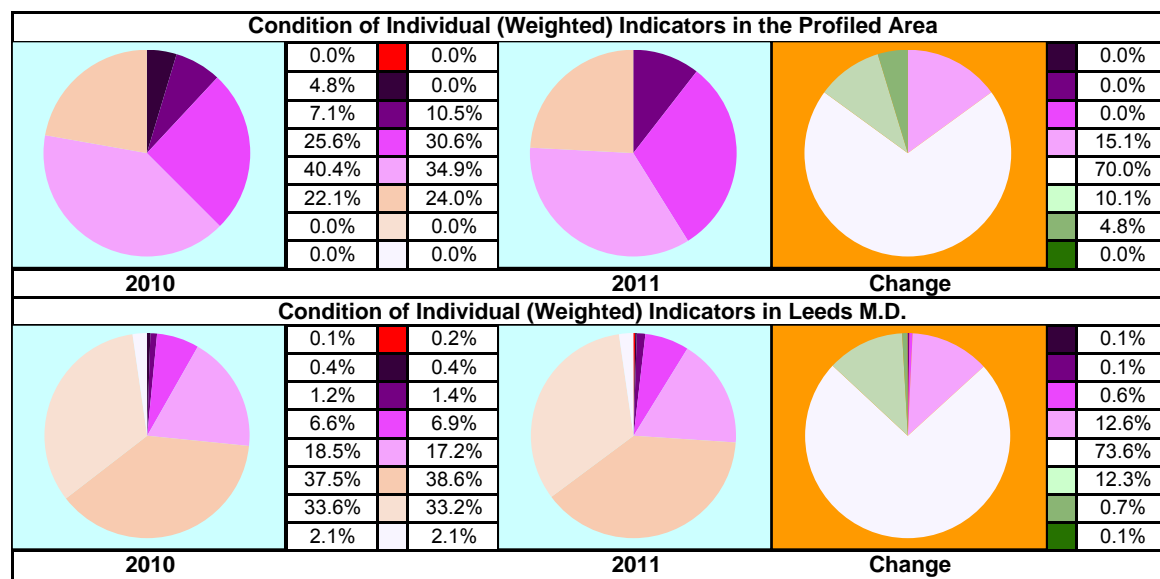
**Indicators:** Shows the score, underlying data and changes for each indicator, for each year.

**Bar Chart (Score Change Across Domains):** A graphical representation of the change in the domain scores between this year and last. N.B. an increase in score indicates improvement, a decrease in score indicates deterioration.

**Bar Chart (Indicators 2010-2011):** A graphical representation comparing the indicator scores for each year. N.B. indicators showing minimal change are represented by green bars.

**Spidergram:** A graphical representation comparing the domain scores for each year.

**Pie Charts:** Graphical representations of the weighted proportions of individual indicators falling into each band.



Indicator and Domain Index Scores	Indicator and Domain Score Changes
Least Successful	Most Deteriorated
▼	▼
▼	▼
▼	▼
Average	Static
▼	▼
Most Successful	Most Improved

*Data cells and pie diagrams are coloured to highlight levels of significance as used elsewhere in the index (from the City average in the case of scores or "No Change" i.e. Zero, in the case of score changes).*

*Whilst the concept of "significance" highlights statistically important values within a dataset it must be noted that the bands are unique to each indicator and domain for each year, or period of comparison in the case of "change".*